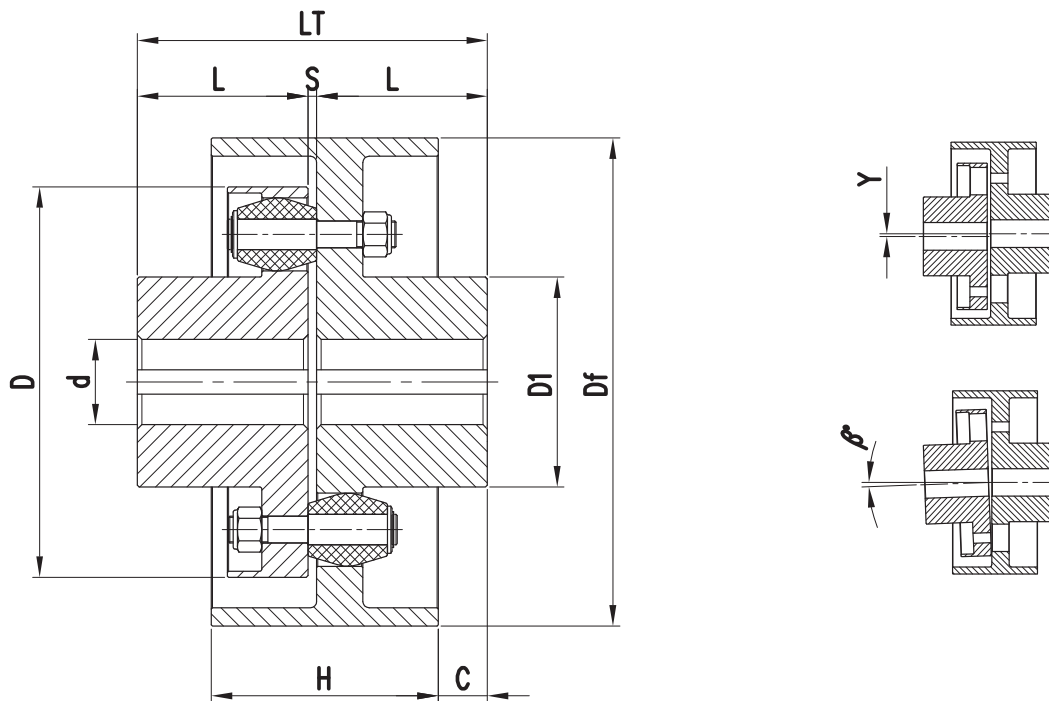


Elastic couplings with pins

PNFF series, version with brake band



TYPE PNFF	TECHNICAL DATA				DIMENSIONS (mm)									No. Pins	WEIGHT (kg)	MISALIGNMENT (±)	
	$\frac{N}{n} = \frac{kW}{rpm}$	Mt (Nm)	Max speed (rpm)	PD ² (kgm ²)	d max	D	D1	L	Df	H	C	S ± ₀ ²	LT			y(mm)	β(°)
100D125X60	0,0335	320	7680	0,0125	35	100	50	50	125	60	13	3	103	10	3,8	0,2	1°
112D160X60	0,0492	470	6000	0,063	40	112	62	55	160								
125D200X75	0,0848	810	4800	0,170	45	125	65	60	200	75	15	6	126	12	9,6		
140D200X75	0,116	1110		0,187	55	140	80	70					146	14	12		
140D250X95			0,147	1400	0,496	60	160	85	80	166	12	20	0,4				
160D250X95	0,198	1890	0,588	70	180	104	90	186	14					25			
180D250X95	0,226	2160	3840	0,621	75	200	106	100	250	95	20	6	206	12	30		
200D250X95				0,774	226	14	46										
200D315X118	0,304	2900	3030	1,632	90	225	128	110	315	118	10	10	226	14	46		
225D315X118	0,503	4800		2,106	95	250	130	120					250	12	54		
250D315X118	0,681	6500	2400	3,963	115	280	158	130	400	150	26	14	270	14	87		
280D400X150				4,302	125	320	172	140					290	12	107		
320D400X150	0,959	9160	1920	16,94	150	360	210	160	500	190	26	30	14	176	0,8		
360D500X190	1,298	12400		29,45	160	400	224	180	560	200	374					12	
400D560X200	1,466	14000	1750	48,62	190	450	265	200	630	236	30	14	414	14	354		
400D630X236				53,92												90	
450D630X236	1,999	19000	1560	90	200	500	280	220	710	265	30	14	454	16	508		
450D710X265				102												570	
501D710X265	2,617	25000	1400	149	200	500	280	220	800	265	30	14	454	16	570		
501D800X265				149													

The Weight and the PD² are calculated considering coupling with pilot bores.

For the machining of the finished bores it is necessary to specify diameters and keyways with tolerances.

On request the brake bands are worked with different diameter, width and position.

You can also have oversized hubs (see **PNM** series), for high transmission (see **PNHP** series), or with oversized hubs and high transmission (see **PNMHP** series).

On request can be made couplings larger sizes.

On request is possible to have one or both hubs with different lengths.