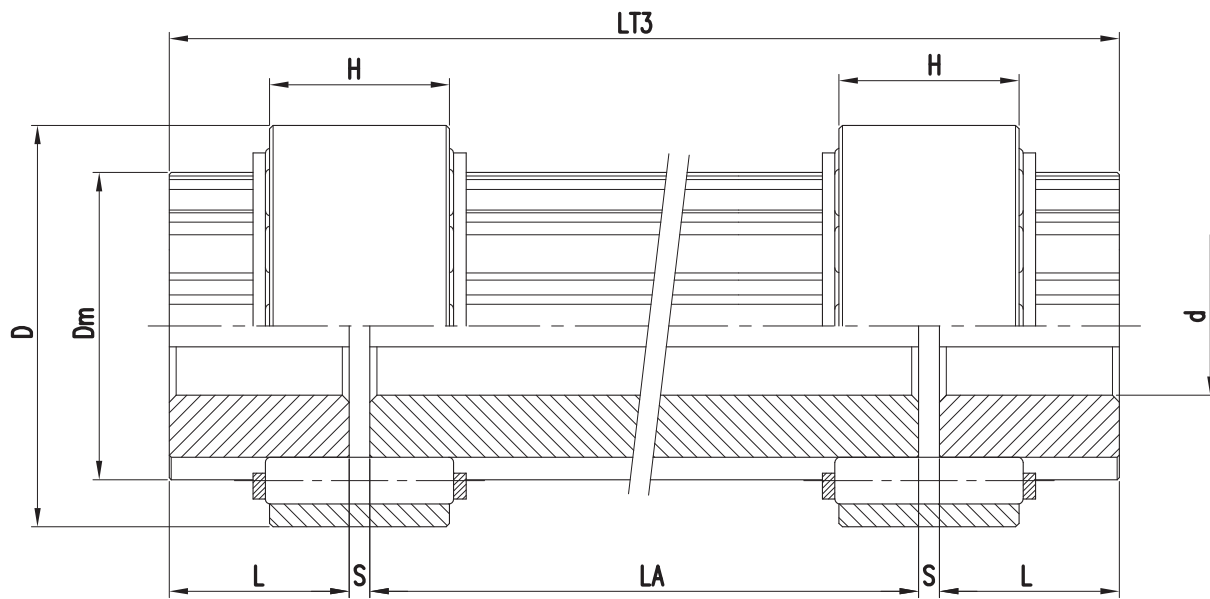


Elastic couplings in aluminum

**REVOLUTION TYPE REAF** series, version with floating shaft

**MAINTENANCE  
WITHOUT MOVING  
CONNECTED MACHINES**



TYPE REAF	TECHNICAL DATA			DIMENSIONS (mm)								No. elastic elements	MISALIGNMENT (±)	
	$\frac{N}{n} = \frac{\text{kW}}{\text{rpm}}$	Mt (Nm)	Max speed (rpm)	d min	d max	D	Dm	L	LT3	s	H		axial (mm)	angular (°)
58	0,012	110	16470	11	25	58	44	26	L + 58	3	26	12	2	8°
67	0,019	180	14260	13	30	67	51	35	L + 78	4	35	12	2,4	
86	0,045	430	11100	21	42	86	67	47	L + 102	4	47	12	3	
104	0,089	850	9180	26	50	104	81	55	L + 118	4	55	15	4	
129	0,173	1650	7400	36	65	129	104	65	L + 140	5	65	15	5	

Dimension LA must be specified with the request.

For the machining of the finished bores it is necessary to specify diameters and tolerances.

On request is possible to have one or both hubs with different lengths.