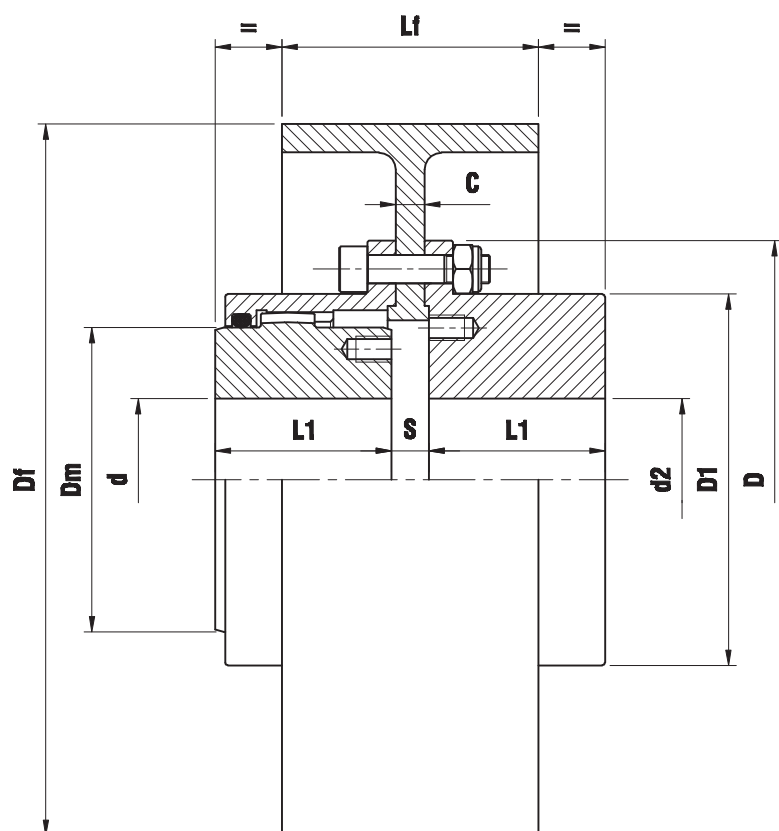


ZRFF series

One oscillating and one rigid hub with brake band



| BRAKE BAND TYPE DIN 15431 | | | Max Speed (rpm) | "Z" COUPLING TYPE | | | | | | |
|------------------------------|-----|----|-----------------------|-------------------|-----|-----|-----|-----|-----|--|
| Df | Lf | C | | | | | | | | |
| 200 | 75 | 8 | 4770 | 110 | 142 | 168 | | | | |
| 250 | 95 | 10 | 3820 | 110 | 142 | 168 | 200 | | | |
| 315 | 118 | 12 | 3030 | 142 | 168 | 200 | 225 | | | |
| 400 | 150 | 14 | 2380 | 200 | 225 | 265 | 300 | 330 | | |
| 500 | 190 | 18 | 1820 | 265 | 300 | 330 | 370 | 405 | 440 | |
| 630 | 236 | 22 | 1510 | 300 | 330 | 370 | 405 | 440 | 500 | |
| 710 | 265 | 22 | 1340 | 370 | 405 | 440 | 500 | | | |

| TYPE | TECHNICAL DATA | | | DIMENSIONS (mm) | | | | | | | Maximum Parallel Misalignment (mm) |
|------------|--------------------------------|--------------|-------|-----------------|------------|-----|-----|-----|-----|--------|---|
| | $\frac{N}{n} = \frac{kW}{rpm}$ | Torque (kNm) | | d max. | d2 max. | D | D1 | Dm | L1 | S | |
| | | Nominal | Peak | | | | | | | | |
| ZRFF - 110 | 0,19 | 1,82 | 4 | 50 | 60 | 110 | 83 | 69 | 43 | 3 + C | 0,15 |
| ZRFF - 142 | 0,30 | 2,85 | 6,27 | 60 | 75 | 142 | 105 | 85 | 50 | 3 + C | 0,20 |
| ZRFF - 168 | 0,59 | 5,6 | 12,32 | 75 | 90 | 168 | 131 | 107 | 62 | 3 + C | 0,25 |
| ZRFF - 200 | 0,93 | 8,8 | 19,36 | 95 | 110 | 200 | 159 | 133 | 76 | 5 + C | 0,30 |
| ZRFF - 225 | 1,50 | 14,3 | 31,46 | 110 | 130 | 225 | 184 | 152 | 90 | 5 + C | 0,40 |
| ZRFF - 265 | 2,41 | 23 | 50,6 | 130 | 150 | 265 | 212 | 178 | 105 | 6 + C | 0,45 |
| ZRFF - 300 | 3,67 | 35 | 77 | 150 | 175 | 300 | 246 | 209 | 120 | 6 + C | 0,50 |
| ZRFF - 330 | 4,64 | 44,3 | 97,46 | 170 | 195 | 330 | 275 | 234 | 135 | 8 + C | 0,55 |
| ZRFF - 370 | 7,33 | 70 | 154 | 190 | 220 | 370 | 307 | 254 | 150 | 8 + C | 0,60 |
| ZRFF - 405 | 8,80 | 84 | 184,8 | 210 | 240 | 405 | 335 | 279 | 175 | 8 + C | 0,70 |
| ZRFF - 440 | 15,95 | 152,3 | 335 | 230 | 260 | 440 | 367 | 305 | 190 | 8 + C | 0,80 |
| ZRFF - 500 | 21,34 | 203,8 | 448,3 | 280 | 300 | 500 | 423 | 355 | 220 | 10 + C | 1,00 |

Specify the dimension Df when making the request.

On request we can supply hardened brake band.

We can supply brake band with different dimensions.

On request we can supply couplings in ZCA version